

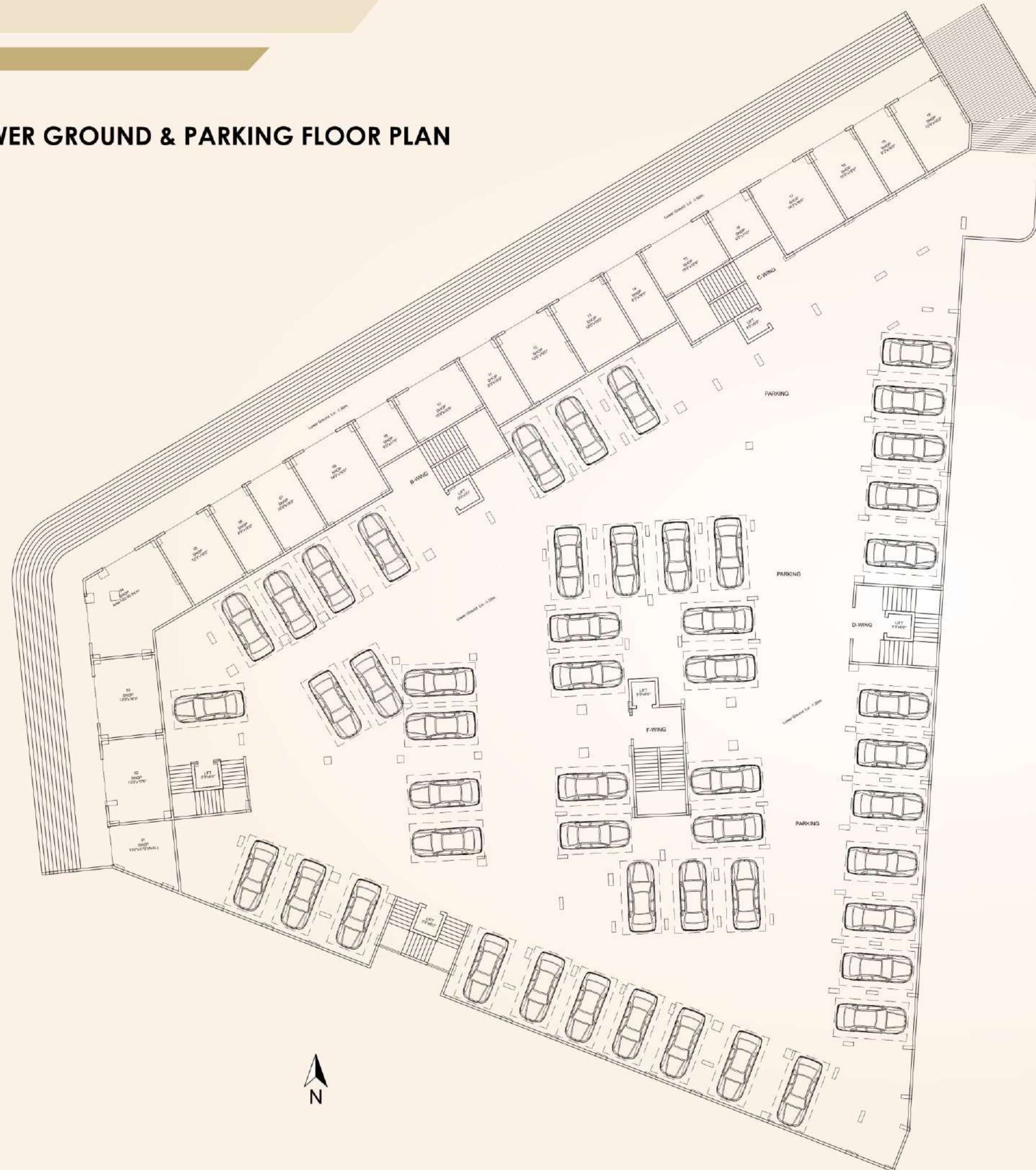








## ■ LOWER GROUND & PARKING FLOOR PLAN



### STRUCTURE :

RCC frame structure of superior quality Designed for earthquake safety

### BRICKS WORKS :

External walls 6" thick brickwork  
Internal walls 4" thick brickwork

### PLASTER :

Smooth Plaster with gypsum finished for internal walls.  
Sand -faced cement plaster for external walls

### DOORS :

Decorative entrance main door laminated on both side with a name plate

### WINDOWS :

Large windows for better air circulation, ventilation & view.  
powder-coated aluminum sliding window M.S. grill for safety & security Granite window sills

### FLOORING :

Vitrified ceramic tiles flooring for the entire flat Anti-skid ceramic flooring in attached terrace & Bathrooms

### POP :

Living room & Bedroom design ceiling POP Entrance corridor design POP



## GROUND FLOOR PLAN



### KITCHEN :

- Granite top kitchen platform
- Stainless steel sink with drainboard
- Glazed tiles dado upto window top
- Provision for exhaust fan
- Dry balcony attached to kitchen with provision washing machine with water inlet & drain , Provision for warer purifier

### ELECTRIFICATION :

- Adequate concealed electrical points with copper wiring
- Fire resistance cabling
- Each flat with ELCB for electrical safety
- Provision for inverter back-up

### PLUMBING :

- Concealed plumbing
- Standard fittings in bathroom, toilet and kitchen

### PAINT :

- external Apex paint for the entire building
- Internal Asian oil bound paint in the entire flat for internal walls

### RAILING / GRILL :

- Window grill with std. design
- staircase MS railing
- Terrace : SS railing

### LIFT :

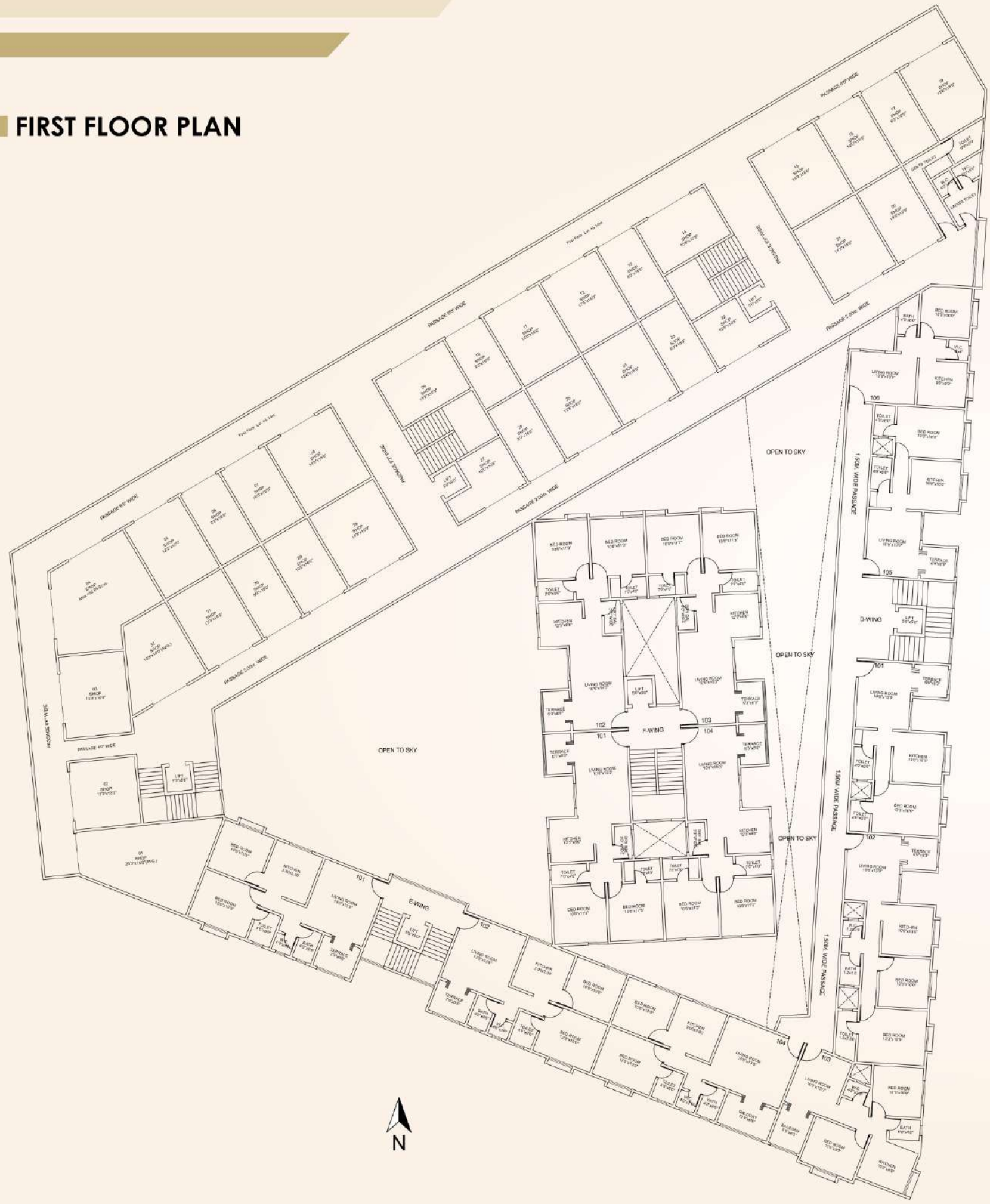
- Auto door opening with SS cabin

### PARKING :

- 100 % Car parking area
- Commercial separate jents & ladies toilet



# FIRST FLOOR PLAN



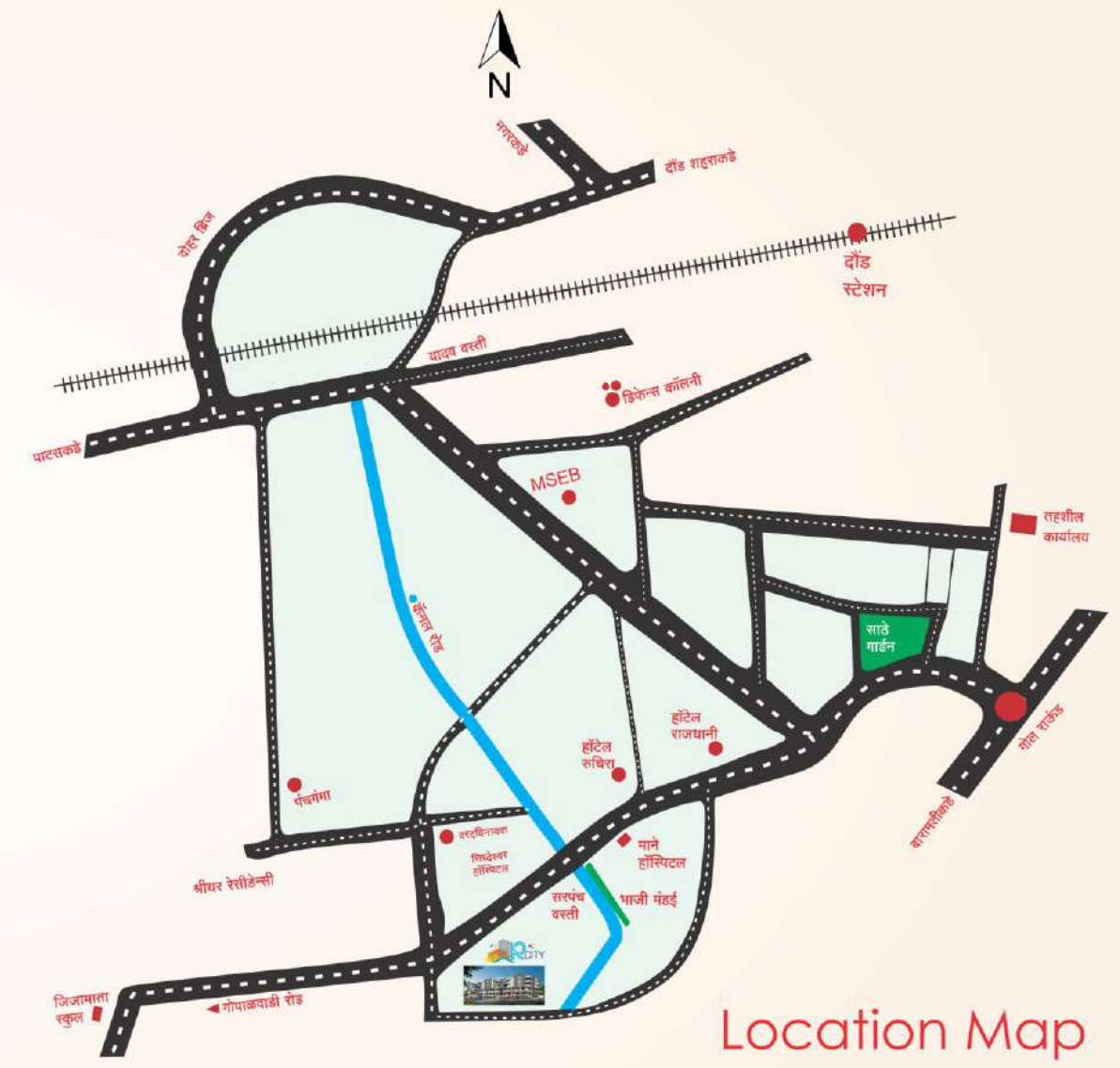


## SECOND FLOOR PLAN





### THIRD FLOOR PLAN



Location Map



Project By-



P52100024114



Office Add.: 3077/1, Kalasavitri, basement - office no.-7, Gopalwadi road, Daund. Mo.: +91 9561600909, 9765050216, 7798089898 Email : recity7799@gmail.com

Disclaimer : The plans, specifications, images and other details herein are only indicative and the developer reserve the right to change any or all of these in the interest of the development. This printed material does not constitute an offer and / or contract any type between the developer and recipient. Any purchaser / lessee of this development shall be governed by the terms and conditions of the agreement for sale / lease entered into between parties, and no details mentioned in this printed material shall in any way govern such transactions. Tolerances of +/- 2 % is possible in the unit areas on account of design and construction variances.