



Enjoy Infra

Elevate Your Lifestyle

www.enjayinfra.com



Welcome to Enjay's Paramount

Enjay's Paramount, a creation by Enjay Infra that redefines modern living in the vibrant heart of Somwar Peth, Pune. At Enjay's Paramount, we pride ourselves on delivering not just a building but a lifestyle that caters to your every need.

CONTENTS

01

About Us

02

Somwar peth

03

Apartments

04

Amenities

05

Retails / shops

About Us



Enjoy's Paramount is not just a building; it's a testament to our commitment to redefine modern living in the heart of Somwar Peth, Pune. Our journey is rooted in a vision that encompasses convenience, luxury, and sustainability. We strive to provide more than just a place to live; we offer a lifestyle that caters to your every need.

At Enjoy's Paramount, we envision a community that goes beyond the ordinary. Our goal is to create spaces that enhance the quality of life, where residents and commercial tenants experience a harmonious blend of comfort and style. We are passionate about providing a holistic living experience that truly elevates your lifestyle.

Enjoy's Paramount is a 7-story architectural marvel that exemplifies modernity and comfort. Each facet of its design has been meticulously crafted to reflect our dedication to creating a dynamic and enriching community. With a mix of residential and commercial spaces, our building sets the stage for a vibrant and thriving neighborhood.

We understand that everyone has unique needs, and we are proud to offer a variety of thoughtfully designed apartments. Whether you're looking for a cozy 1BHK, an efficient 1RK, a spacious 2BHK, or a luxurious 3BHK unit, our spaces are tailored to maximize comfort and functionality.

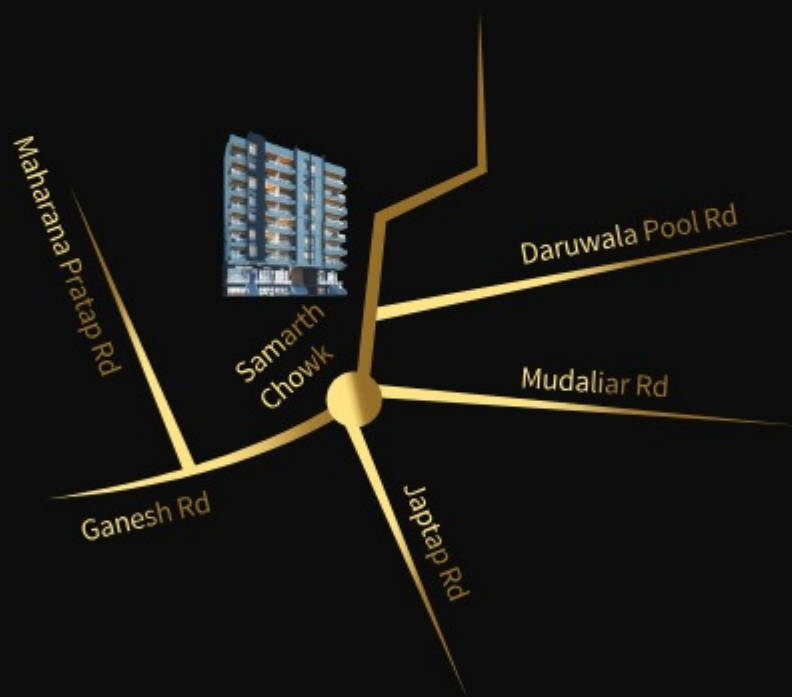
Parking should never be a concern. Enjoy's Paramount features a spacious basement parking facility, ensuring the safety and convenience of your vehicles. In addition to the residential floors, our building offers premium shop and office spaces, making it a bustling hub for businesses and retailers alike.



Enjoy Infra Phoenix of Somwar Peth

Somwar Peth is a well-established locality in Pune, known for its historical significance and cultural charm. Being near Daruwalla Pool adds to the appeal, making it a prime location that attracts both residents and businesses.

The area boasts excellent connectivity to major parts of Pune. Proximity to key roads and public transportation hubs ensures easy accessibility, making it convenient for residents and businesses alike.




Somwar Peth is steeped in history, with many landmarks and cultural attractions. This can positively impact the value of your property over time, as the area continues to develop and evolve.- Investing in a property near Daruwalla Pool in Somwar Peth could offer potential for appreciation over the years.

If you're considering renting out the property, the demand for rental accommodations in well-connected and culturally rich areas like Somwar Peth is generally high. This can be an additional source of income for you.

The area is likely to witness ongoing development in terms of infrastructure and amenities. As the neighborhood grows, the value of your property is likely to increase, providing a favorable return on investment. Somwar Peth is known for its rich cultural heritage. Living or owning a property in this area provides access to cultural events, festivals, and recreational facilities, enhancing the overall lifestyle.

Your Paramount Choice

A modern, multi-story apartment building with a light blue and dark grey facade. The building features multiple balconies with glass railings and potted plants. The ground floor has large glass windows and doors, with signs for 'GENERAL STORES', 'MEDICAL', 'CAFE', and 'REXOR TOWN'. The building is set against a blue sky with light clouds. In the foreground, there is a wet pavement reflecting the building and sky, with some greenery and a street lamp on the right.

We are not just builders; we are creators of spaces that enhance the quality of life. Our promise is to provide you with a lifestyle that combines serenity, fitness, and a strong sense of community.

Join us in embracing a lifestyle that is truly paramount.



1 BHK

2 BHK



3 BHK

We understand that everyone has unique needs, and we are proud to offer a variety of thoughtfully designed apartments. Whether you're looking for a cozy 1BHK, an efficient 1RK, a spacious 2BHK, or a luxurious 3BHK unit, our spaces are tailored to maximize comfort and functionality.

Huge Heart Apartments

1BHK Apartments - Your Cozy Haven

Discover the perfect blend of comfort and convenience with our 1BHK apartments. Thoughtfully designed, these units offer a comfortable living space for individuals or couples.

Size: Approximately 400sqft.

Features:

- Spacious living and dining area.
- Well-designed bedroom with ample storage space.
- Modern kitchen with premium fixtures.
- Stylish bathroom with high-quality fittings.
- Ideal for young professionals, couples, or small families seeking a compact yet functional living space.

2BHK Apartments - Spacious Living Redefined

Our 2BHK apartments are designed to accommodate the needs of growing families. With generous space and modern amenities, they offer a comfortable and stylish living environment.

Size: Approximately 800sqft.

Features:

- Open and airy living and dining area.
- Two well-appointed bedrooms with storage solutions.
- Contemporary kitchen with quality appliances.
- Elegant bathrooms with modern fixtures.
- Perfect for families looking for a spacious and welcoming home.

3BHK Apartments - Luxury and Space Combined

Experience the epitome of luxury with our 3BHK apartments. These spacious units offer an extravagant living space for discerning residents.

Size: Approximately 150sqft.

Features:

- Expansive living and dining area with abundant natural light.
- Three lavish bedrooms, including a master suite.
- A fully-equipped, modern kitchen with high-end appliances.
- Upscale bathrooms with premium fittings.
- Ideal for larger families or those who desire ample living space and sophistication.

1RK Apartments - Efficient Living Solutions

Our 1RK apartments offer a practical and efficient living space, perfect for individuals or couples seeking simplicity without compromising on quality.

Size: Approximately 300sqft.

Features:

- Compact and functional living and dining area.
- A well-planned bedroom area with storage solutions.
- A modern kitchenette for convenience.
- Stylish bathroom with quality fixtures.
- Suited for those looking for a compact, low-maintenance, and budget-friendly living option.

Enjoy's Paramount Amenities

Welcome to the pinnacle of luxury living at Enjoy's Paramount, where the sky is your playground. Our rooftop terrace amenities redefine the art of relaxation, fitness, and community. From sunrise yoga sessions to stargazing at night. With these terrace amenities, every moment becomes an opportunity to savor the beauty of life. Join us as we embrace a lifestyle where the sky's the limit, and where comfort and luxury meet the endless horizons of your imagination.

Amenities are as follows

Children play area

Open gym

Yoga/Meditation Center

Solar powered





www.enjayinfra.com



Synergy with Residential Community

Welcome to Enjay's Paramount, a place where business meets vibrancy. Our building offers a unique opportunity for entrepreneurs, retailers, and businesses to thrive in a dynamic and bustling neighborhood.

Commercial Spaces

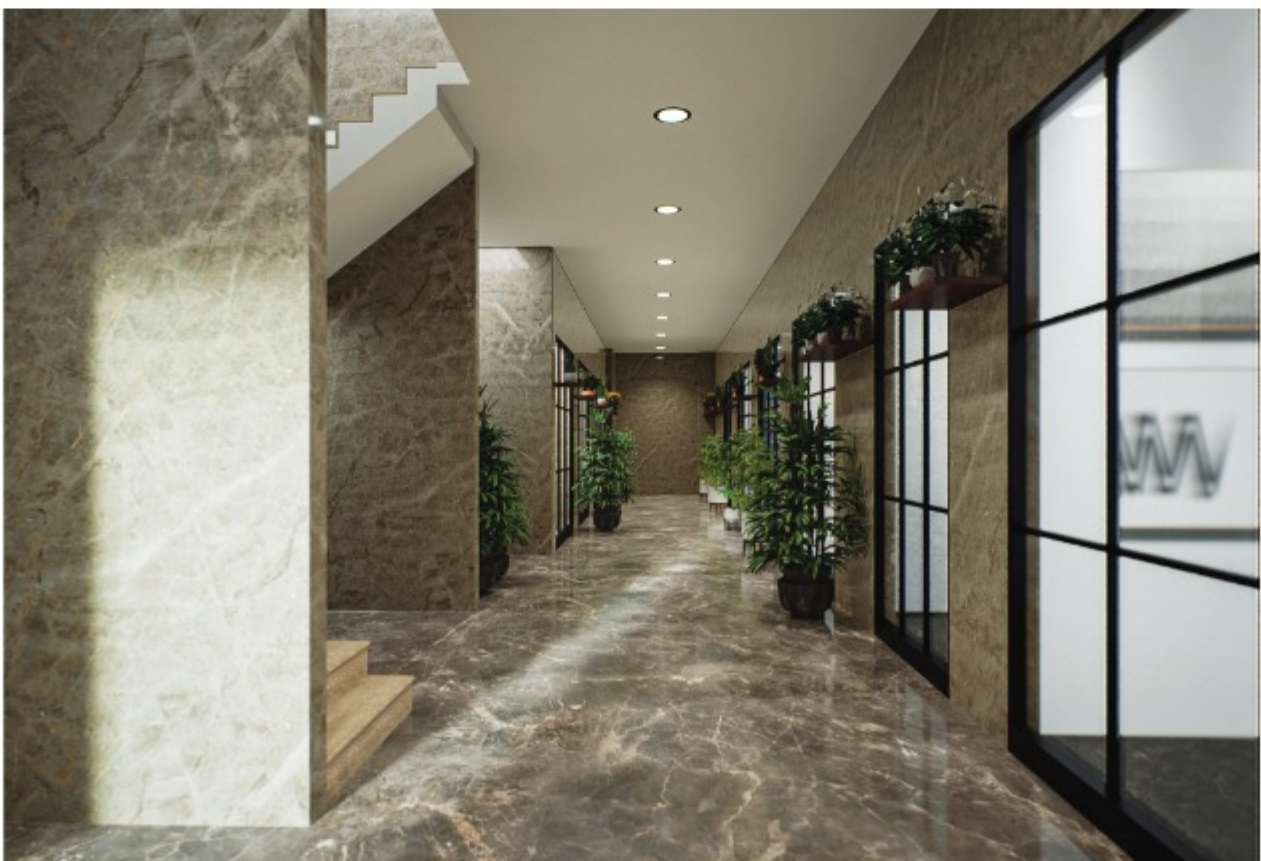
At Enjay's Paramount, we provide an array of commercial spaces designed to suit your business needs.

Retail Shops

Join the retail revolution at Enjay's Paramount. Our retail spaces offer a prime location for your business, attracting foot traffic from residents and passersby. Whether you're launching a new venture or expanding an existing brand, our retail spaces are designed to help you make a mark in the market.

Office Spaces

Elevate your business with our premium office spaces. These workspaces are ideal for professionals, startups, and established businesses alike. Benefit from a central location, modern amenities, and a thriving business environment.



Strategic Location

Enjoy's Paramount is strategically situated in the heart of Somwar Peth, ensuring your business is within easy reach of key hotspots, educational institutions, and business districts. Our location provides excellent visibility and accessibility, making it the perfect choice for your business venture.

Business Amenities

When you choose our commercial spaces, you gain access to a host of business amenities, including high-speed internet connectivity, power backup, security, and a professional environment. Your business operations will run smoothly, allowing you to focus on growth and success.

Synergy with Residential Community

Our unique mix of residential and commercial spaces fosters a thriving community. As a business tenant, you'll benefit from a built-in customer base, creating a harmonious synergy between residents and businesses. Your brand becomes an integral part of the neighborhood.

Flexible Spaces

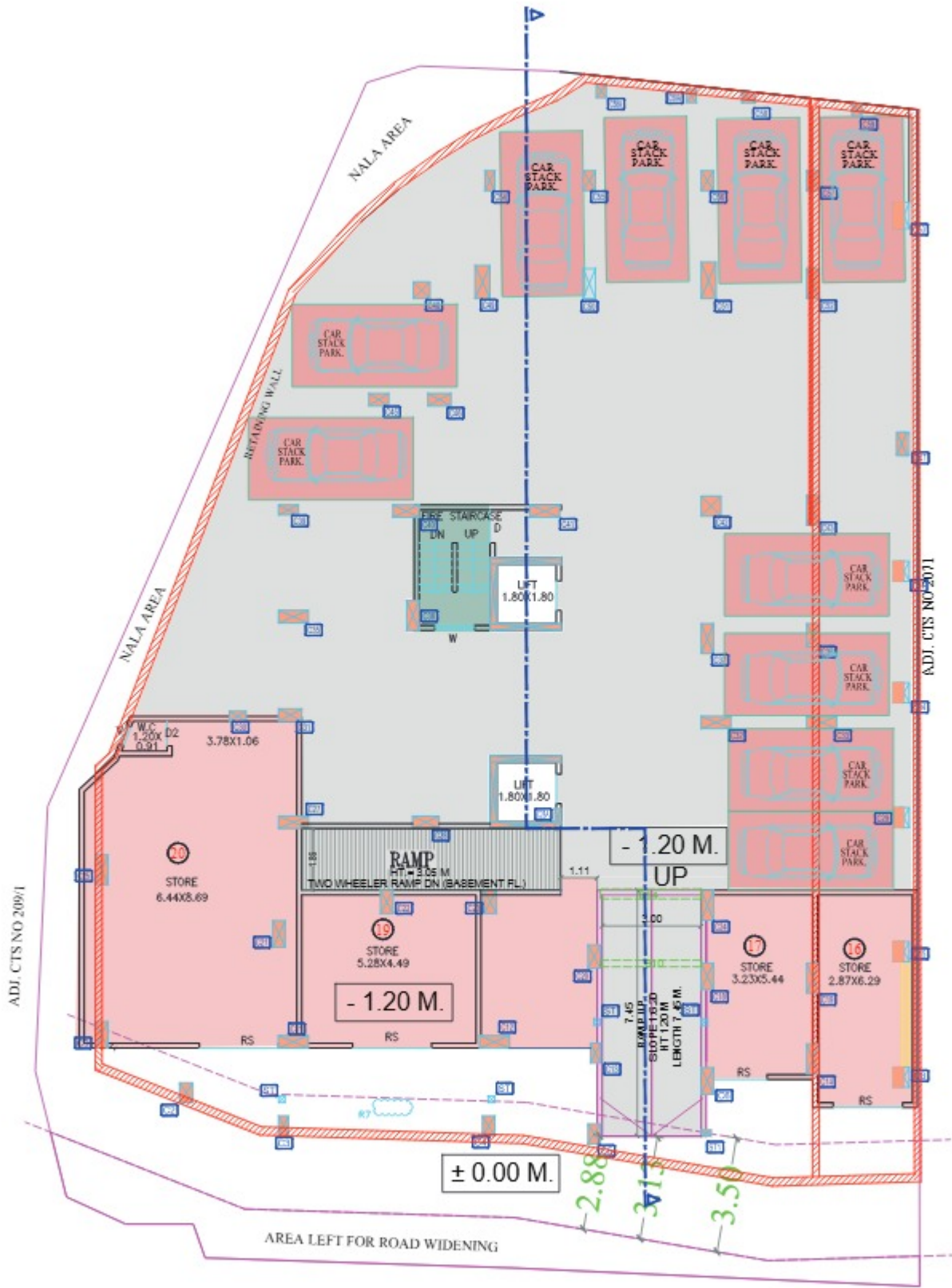
Whether you require a compact shop or a spacious office, our flexible space options cater to your business's specific needs. We understand that each business is unique, and our spaces can be customized to match your vision.

Your Business Hub Awaits

Enjoy's Paramount is more than just a building; it's a platform for your business to flourish. Join us in creating a dynamic and vibrant commercial community, where success and growth are within your reach.



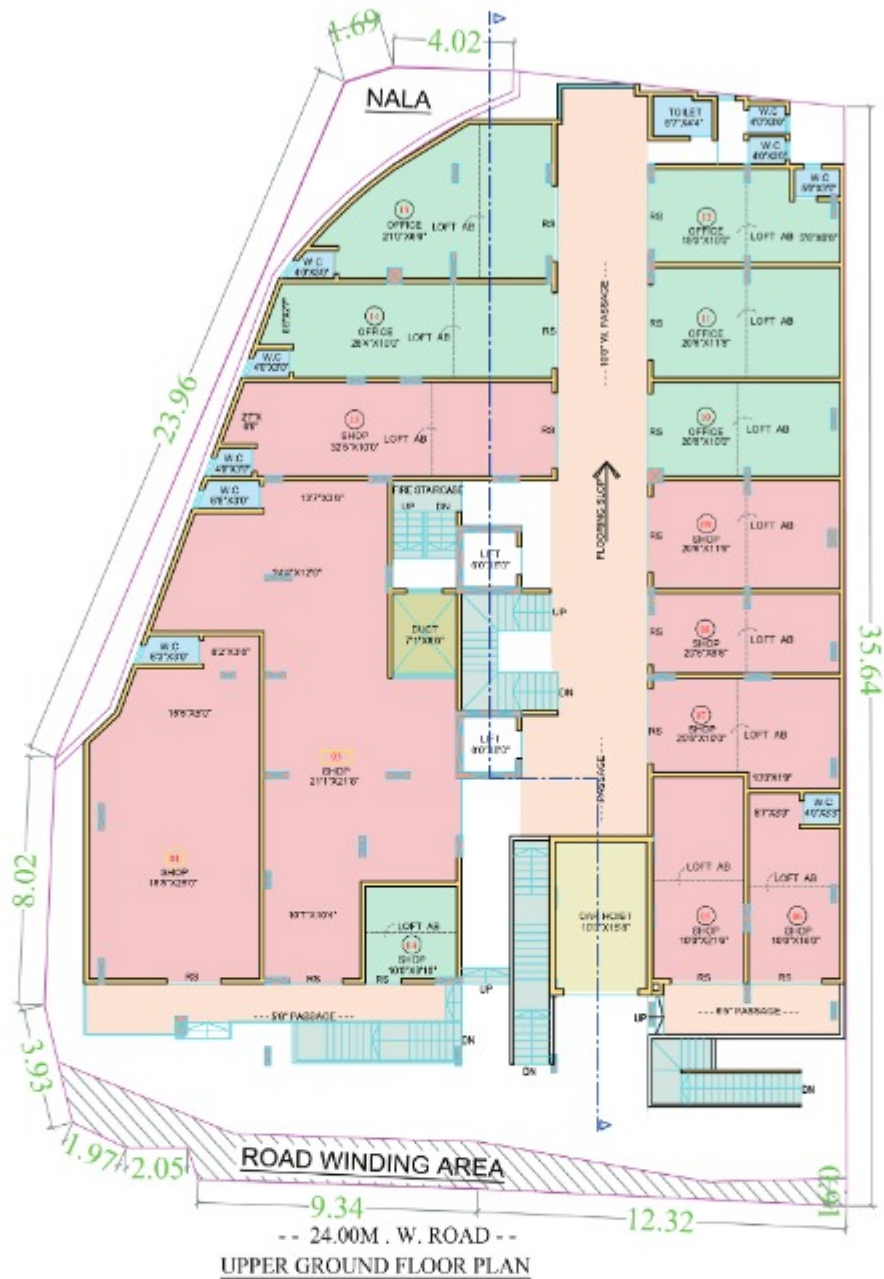
LOWER GROUND FLOOR PLAN



(SCALE-1:100)

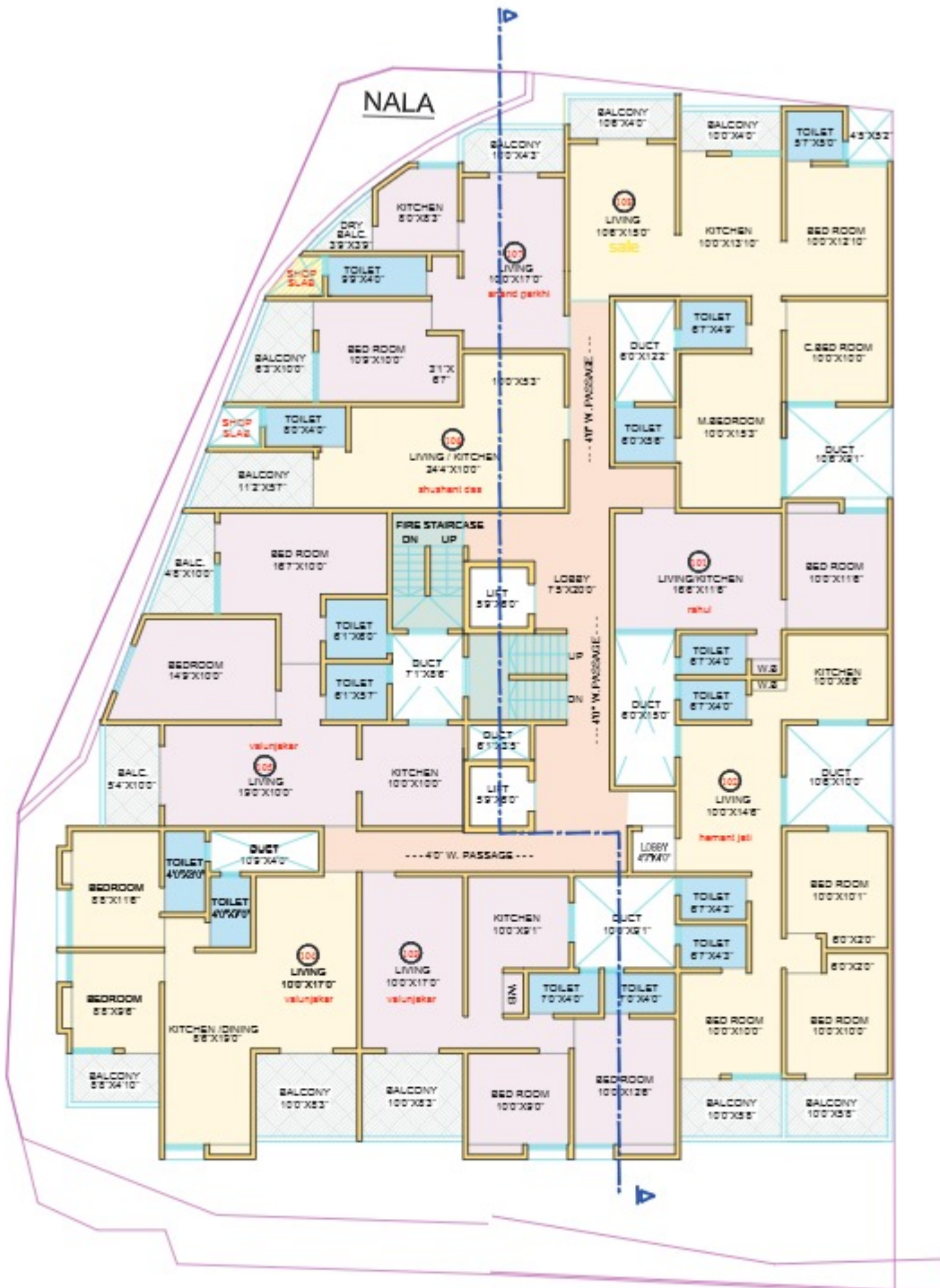


UPPER GROUND FLOOR PLAN



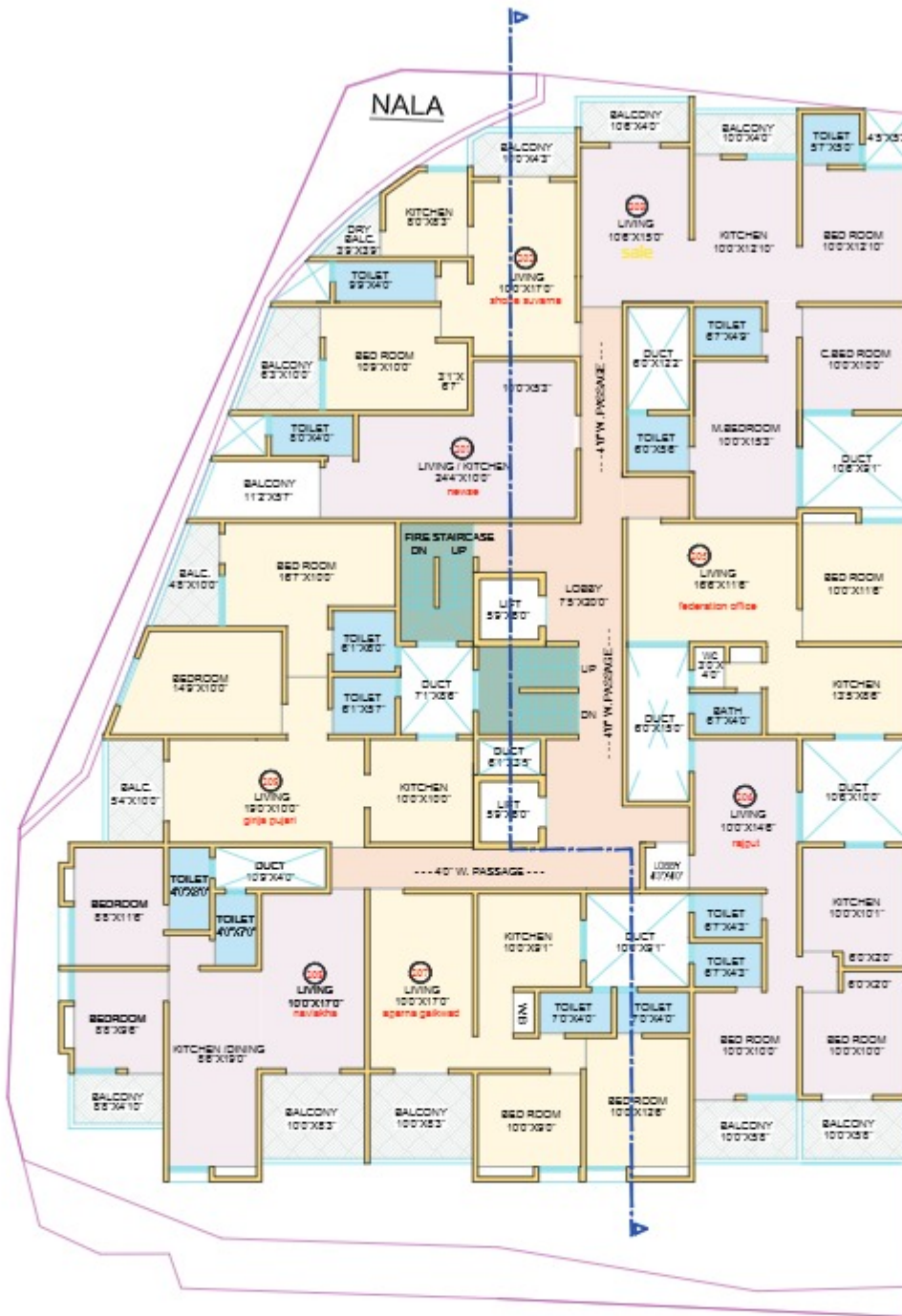
AREA STATEMENT :			UPPER GROUND FLOOR		
SHOP NO	Carpet Area (Sq.Ft)	Salable Area (Sq.Ft)75%	SHOP NO	Carpet Area (Sq.Ft)	Salable Area (Sq.Ft)75%
01	634.00	1110.00	08	178.00	312.00
03	1002.00	1754.00	09	239.00	418.00
04	101.00	177.00	10	209.00	366.00
05	219.00	383.00	11	244.00	427.00
06	199.00	348.00	12	206.00	361.00
07	226.00	396.00	13	344.00	602.00
			14	318.00	557.00
			15	359.00	628.00
TOTAL			7839.00		

FIRST FLOOR PLAN



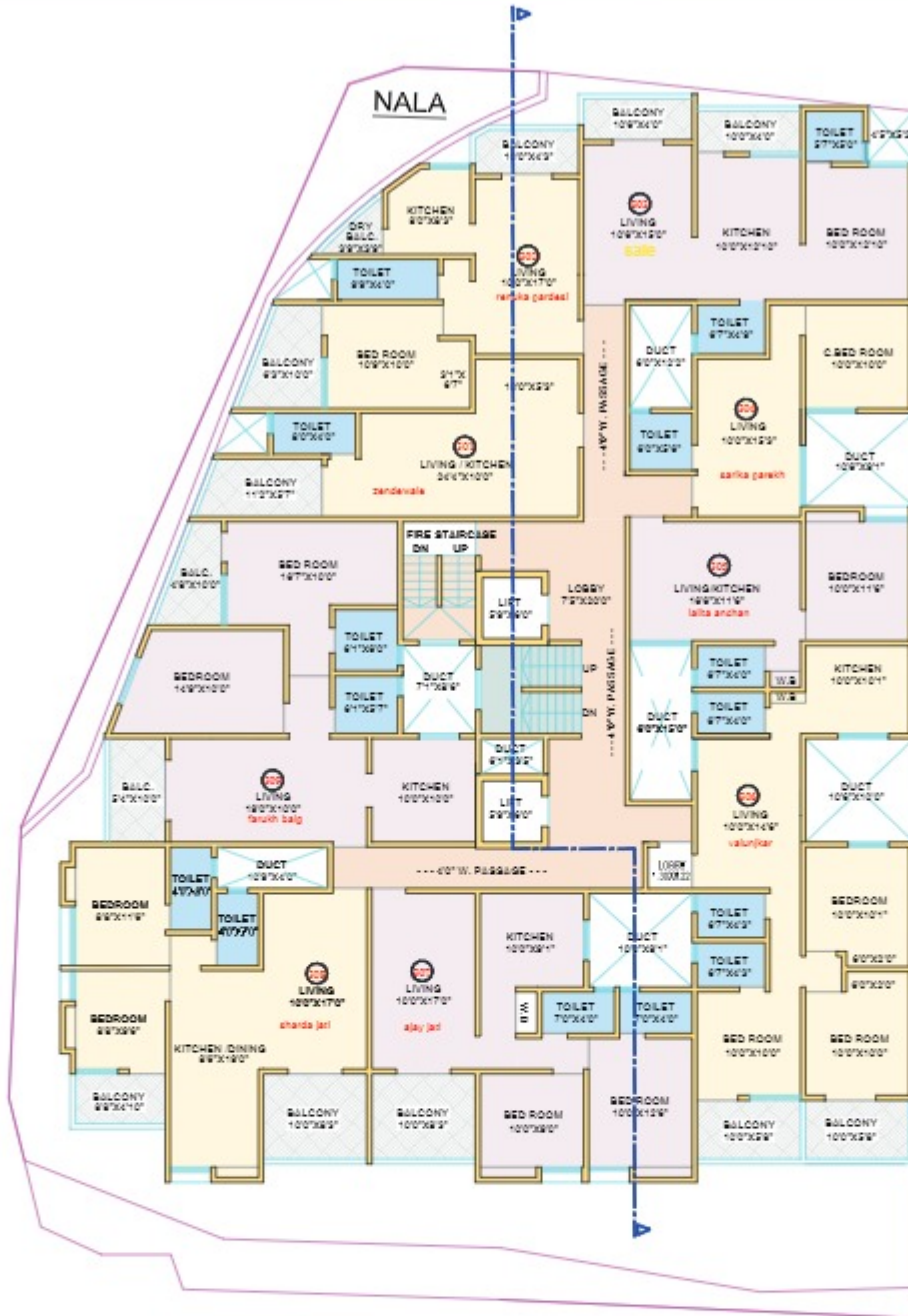
AREA STATEMENT :				FIRST FLOOR
FLAT NO.	Carpet Area (Sq.Ft)	Terrace/ Balcony	Total Area (Sq.Ft)	Salable Area (Sq.Ft) 37%
101	364.00	- - -	364.00	499.00
102	761.00	114.00	875.00	1199.00
103	643.00	82.00	725.00	993.00
104	649.00	124.00	773.00	1059.00
105	757.00	100.00	857.00	1174.00
106	324.00	62.00	386.00	529.00
107	457.00	123.00	580.00	795.00
108	840.00	81.00	921.00	1262.00
TOTAL				7510.00

SECOND FLOOR PLAN



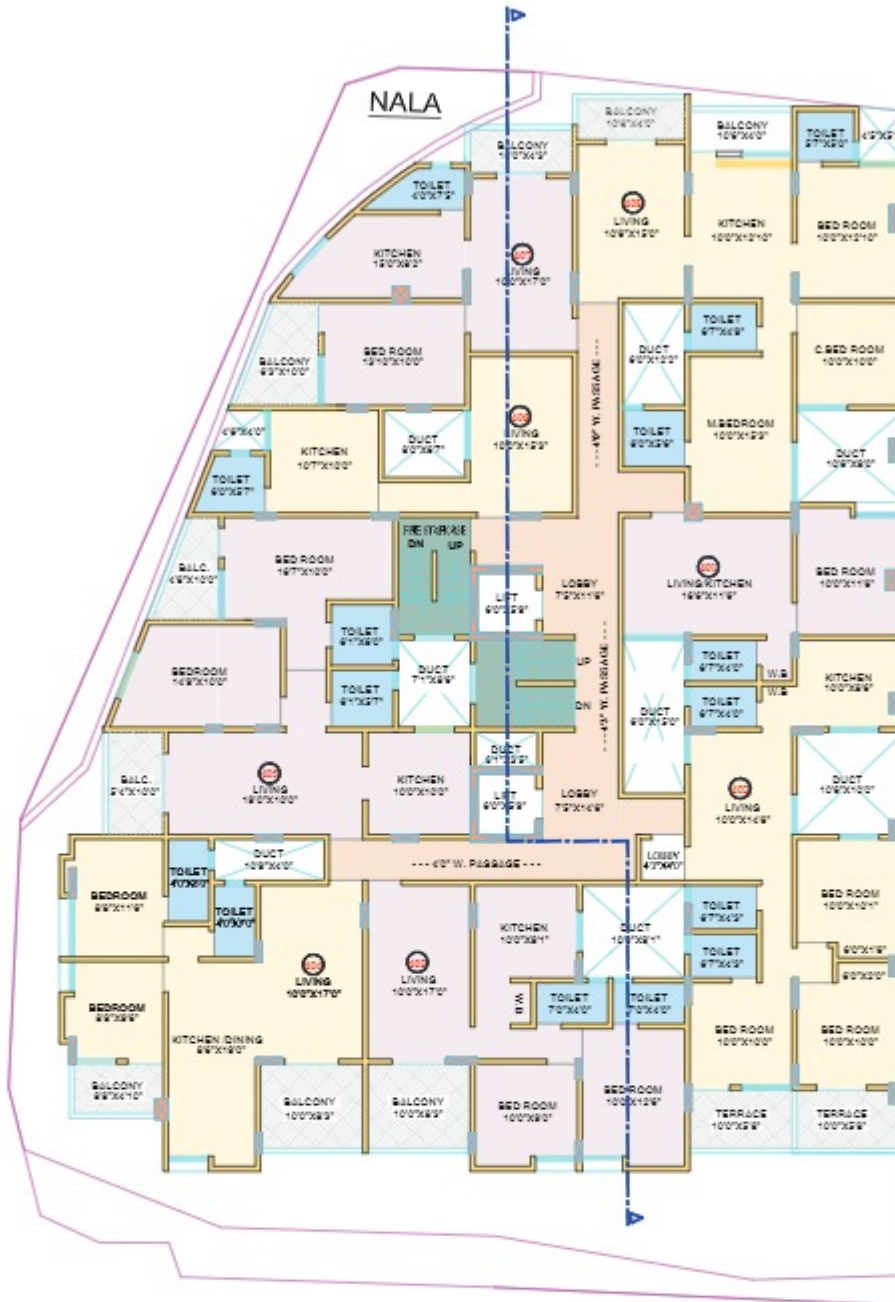
AREA STATEMENT :				SECOND FLOOR
FLAT NO.	Carpet Area (Sq.Ft)	Terrace/Balcony	Total Area (Sq.Ft)	Sqable Area (Sq.Ft)37%
201	324.00	62.00	386.00	529.00
202	460.00	123.00	583.00	799.00
203	840.00	81.00	921.00	1262.00
205	502.00	- - -	502.00	688.00
206	662.00	114.00	776.00	1063.00
207	643.00	82.00	725.00	993.00
208	649.00	124.00	773.00	1059.00
209	757.00	100.00	857.00	1174.00
TOTAL				7567.00

THIRD FLOOR PLAN



AREA STATEMENT :				THIRD FLOOR
FLAT NO.	Carpet Area (Sq.Ft)	Terrace/ Balcony	Total Area (Sq.Ft)	Saleable Area (Sq.Ft)37%
301	324.00	62.00	386.00	529.00
302	457.00	123.00	580.00	795.00
303	518.00	81.00	599.00	821.00
304	311.00	---	311.00	426.00
305	363.00	---	363.00	497.00
306	761.00	114.00	875.00	1199.00
307	643.00	82.00	725.00	993.00
308	649.00	124.00	773.00	1059.00
309	756.00	100.00	856.00	1173.00
TOTAL				7492.00

FOURTH TO SEVENTH FLOOR PLAN



AREA STATEMENT :			TYPICAL FOURTH TO SEVENTH FLOOR	
FLAT NO.	Carpet Area (Sq.Ft)	Terrace/Balcony	Total Area (Sq.Ft)	Salable Area (Sq.Ft)37%
401	354.00	---	354.00	485.00
402	723.00	114.00	837.00	1147.00
403	609.00	82.00	691.00	947.00
404	616.00	124.00	740.00	1014.00
405	716.00	100.00	816.00	1118.00
406	321.00	---	321.00	440.00
407	470.00	105.00	575.00	788.00
408	801.00	81.00	882.00	1208.00
			TOTAL	7147.00



Enjay Infra

