

# *Celebrate Life*



**YASH AURA**

**1 & 2 BHK**  
Salagarwadi, Solapur

*Project by*



**YASHODHAN**  
**DEVELOPERS**

**Lead the future**





YASH CELEBRIA



## The Promise

by Yashodhan Developers

Soaring above Solapur's rapidly changing skyline, Yash Celebria is an address you can tell apart even from a distance. An exclusive offering unfolds at the finest location in Salagarwadi, Solapur within easy access of city conveniences yet recessed from the daily bustle. Amidst the picturesque scenery, this residential enclave offers unmatched space planning, modern amenities and abundance of green spaces.

Yash Celebria offers easy connectivity to all of Solapur, while keeping everything your life desires right around the corner. The project is just 4 KM from Solapur Railway Station and Bus Stand with easily connectivity to Pune - Hyderabad highway and Bijapur highway.

Book your dream flat at Yash Celebria today and celebrate life.

Yashodhan Developers is a Pune based developer and creates home that deliver your dreams. And it doesn't just stop there – in our constant endeavor to create value beyond bricks, we invest in lasting relationships with our homeowners. We are synonymous and committed for the highest standards.

Yash Celebria offers modern amenities, together with the warmth of a traditional home.





## Specifications

STRUCTURE	Earthquake resistant RCC structure
FLOORING	Vitrified Tiles for entire Flat Terrace / Balcony - Ceramic / Vitrified tiles Common passage - Vitrified tiles Staircase tappa - Tandoor / Kota
ELECTRICAL	Concealed copper wiring, TV point in living and bedroom, Video door phone and intercom facility
KITCHEN	Granite otta with stainless steel sink Kitchen Dado Up-to lintel level
WALL FINISH	Internal wall: Gypsum or equivalent finish External wall: Sand faced
PAINTING	Internal walls: Oil Bond Distemper External walls: Weatherproof Paint M.S. Grill (Inside) for windows with oil paint
DOORS & WINDOWS	Entrance door with decorative laminate Sliding Windows with mosquito net
PLUMBING & SANITATION	Internal concealed CPVC plumbing Sanitary ware - Parryware / equivalent make
LIFT	Automatic lift Kone / equivalent make with inverter backup
PARKING AREA	Concrete Flooring Tiles around the building and in parking area
SPECIAL FEATURES	Solar Water Heater Attractive Lobby Common Garden and Children Play area CCTV for common area

## Cut Sections

1 BHK



2 BHK





## Project Features

Vastu Compliant Design

Attractive Entrance Lobby

Common Garden Area with Landscape design

Tree Plantation

Solar Water Heater

Common areas and Lift back up

Security Cabin with CCTV Monitor

Video door Phone and Intercom

Rain Water Harvesting

Name Board and Letter Box

Backup for Lift, Selective Common Areas, Water Pump

Children Play Area

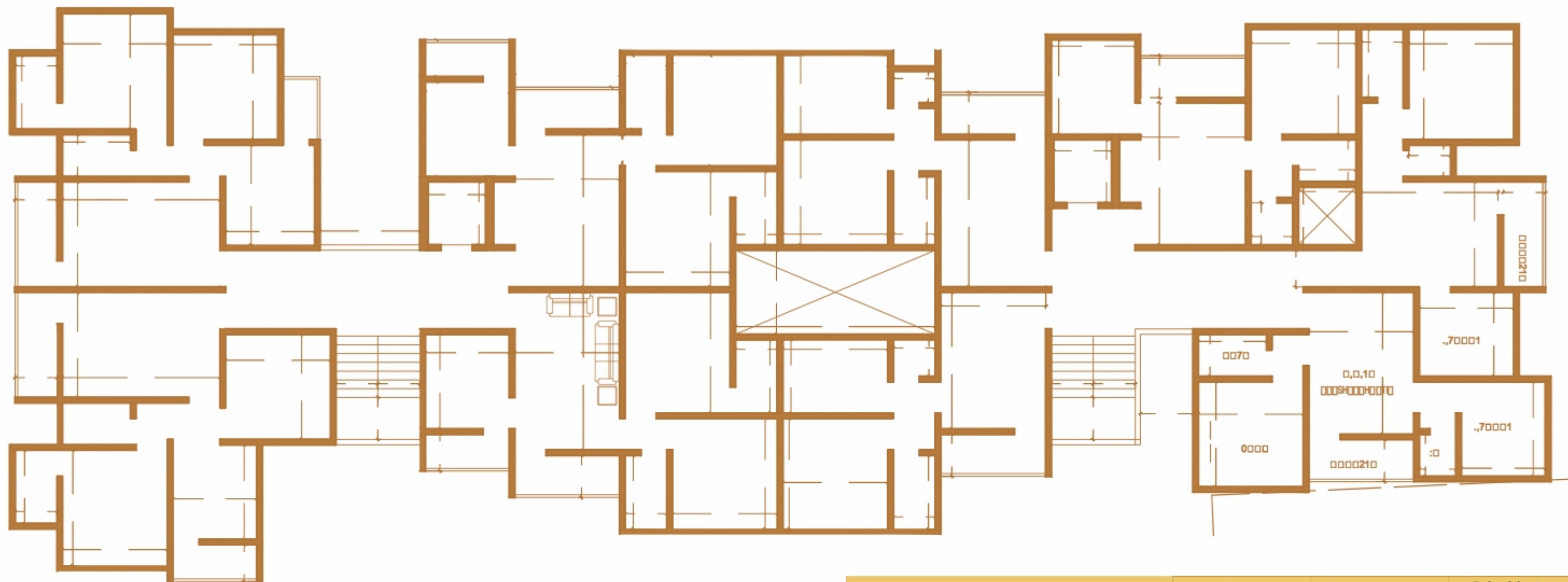
*Home is where love resides, memories are created,  
friends and family belong, and laughter never ends*

*~ Celebrate Life ~*





**The Promise**  
by Yashodhan Developers



Shop Number	Carpet Area (sqft)	Saleable Area (sqft)
1	161.50	222.87
2	161.50	222.87
3	190.00	262.20
4	190.12	262.37

Flat Nos.	Flat Type	Carpet Area (sqft)	Saleable Area (sqft)
101, 201, 301, 401, 501, 601, 701	2BHK	618.02	852.87
102, 202, 302, 402, 502, 602, 702	2BHK	636.75	878.72
103, 203, 303, 403, 503, 603, 703	2BHK	613.00	845.94
104, 204, 304, 404, 504, 604, 704	2BHK	612.50	845.25
105, 205, 305, 405, 505, 605, 705	1BHK	438.81	605.56
106, 206, 306, 406, 506, 606, 706	1BHK	442.75	611.00
107, 207, 307, 407, 507, 607, 707	1BHK	440.71	608.18
108, 208, 308, 408, 508, 608, 708	1BHK	452.84	624.92
109, 209, 309, 409, 509, 609, 709	1BHK	438.50	605.13



Office: 238, 2nd Floor, 93 Avenue, Fatima Nagar, Pune - Solapur Road, Pune - 411022  
Website: [www.yashodhandevelopers.com](http://www.yashodhandevelopers.com)

☎ 8788990571 / 7218984123

Site: Phase 2, Madhuban Paradise, Plot No. 4 & 5, Salagarwadi, Solapur - 413005

#### Credits

JV Partner  
Mrs. Madhuri Shrishail Lature

Architect and Structural Consultants  
Rahul Khamitkar  
M/s Khamitkar and Associates, Solapur

Legal  
Advocate Kiran Wagaj

Construction Partner  
MKAusten Infratech LLP, Pune

Brand impressions, floor plans, layout plans, specifications, images, names, drawings, perspectives, models, graphics, logos, icons and other details herein are only indicative and the Developer/Promoter Owner reserves the right to change all or any of them. Amenities and features of the project listed are subject to change/deletion at the discretion of the Company and/or subject to changes on the directions issued by the Competent Authorities.

In no event shall Yashodhan Developers and its related, affiliated and subsidiary companies be liable for any direct, indirect, special, incidental, or consequential damages arising out of the use of the information herein.

#### Disclaimer

1. The sizes / shapes / positions of opening, ducts, balconies and landscape are subject to change
2. Room sizes indicated are structural sizes and actual sizes may vary
3. Areas mentioned are subject to change after finalization of structural design and completion
4. Furniture layout is only for representation